

"CAT CLASSIC" CROSS COUNTRY MEET INFORMATION

Date: Thursday, October 6, 2011

Shawnee Mission Park – Shawnee (KC), KS

DIRECTIONS: Take I-70 east to I-435 south (Exit 411A). Get off at the Midland Drive exit (Exit 5). Go left at the bottom of the ramp onto Midland. Turn right on Renner Rd. (by the Wendy's and movie theatre) Enter the park through the "Theatre in the Park" entrance. (7900 Renner Rd.) Parking is available in the "Theatre in the Park" parking lot.

MIDDLE SCHOOL RACE TIMES:

7 th Grade Girls	3:30pm	1 mile
7 th Grade Boys	3:45pm	1 mile
8 th Grade Boys and Girls	4:00pm	2 miles

WRMS Records for "Cat Classic"

7 th Boys	2008	Reid Towns	5:28.72	1 mile
7 th Girls	2010	Caroline Craig	6:04.97	1 mile
8 th Boys	2010	Michael Prekopy	11:42.03	2 miles
8 th Girls	2008	Bre Waters	13:35.00	2 miles

Medals will be given for the top 10 in each grade and division (10 boys and 10 girls in 8th grade race). Team results will be announced. The first three runners will count in team scoring and 4th and 5th runners will be tiebreakers. *There will be no middle school medals ceremony.* Top 10 medals will be awarded immediately. Tear off numbers will be used as the scoring system. Remember to walk through the entire chute so workers can tear off the number.

PARTICIPATING MIDDLE SCHOOLS: 7 teams: Robert Clark (Bonner Springs), Lexington Trails (DeSoto), Mill Creek (Lexexa), Tonganoxie, Washburn Rural, Turner (KCK), and Maranatha (Shawnee)

A white line will serve as a guide throughout the course.

We will leave school by 1:10pm and arrive at Shawnee Mission Park to warm up. Students will get out of class at 12:50pm. Students need to report to the locker rooms and change to get ready to leave. Students need to talk with their 6th and 7th hour teachers and tell them they will be gone and hand in any homework due that day and get work that will be missed.

This is a dual middle school and high school meet. However, WRHS XC is not participating in the meet. Therefore, we will leave the meet shortly after our last race.

Athletes are allowed to bring their own snacks and drink. Please **no** glass containers.

We will be stopping after the meet to eat in Lenexa (KC) at the Taco Bell and McDonald's at 16130 W. 87th St. **Athletes are responsible for their own meal money.**

Dress for cold and wet weather. The school issued sweats and uniforms will be worn at all meets. You may also wear your Washburn Rural apparel that you bought.

If the athlete is not riding the bus home, the athlete AND his/her parent must sign out with a coach before leaving. Athletes may leave ONLY with their parent/guardian. NO EXCEPTIONS! Athletes may leave after their race.

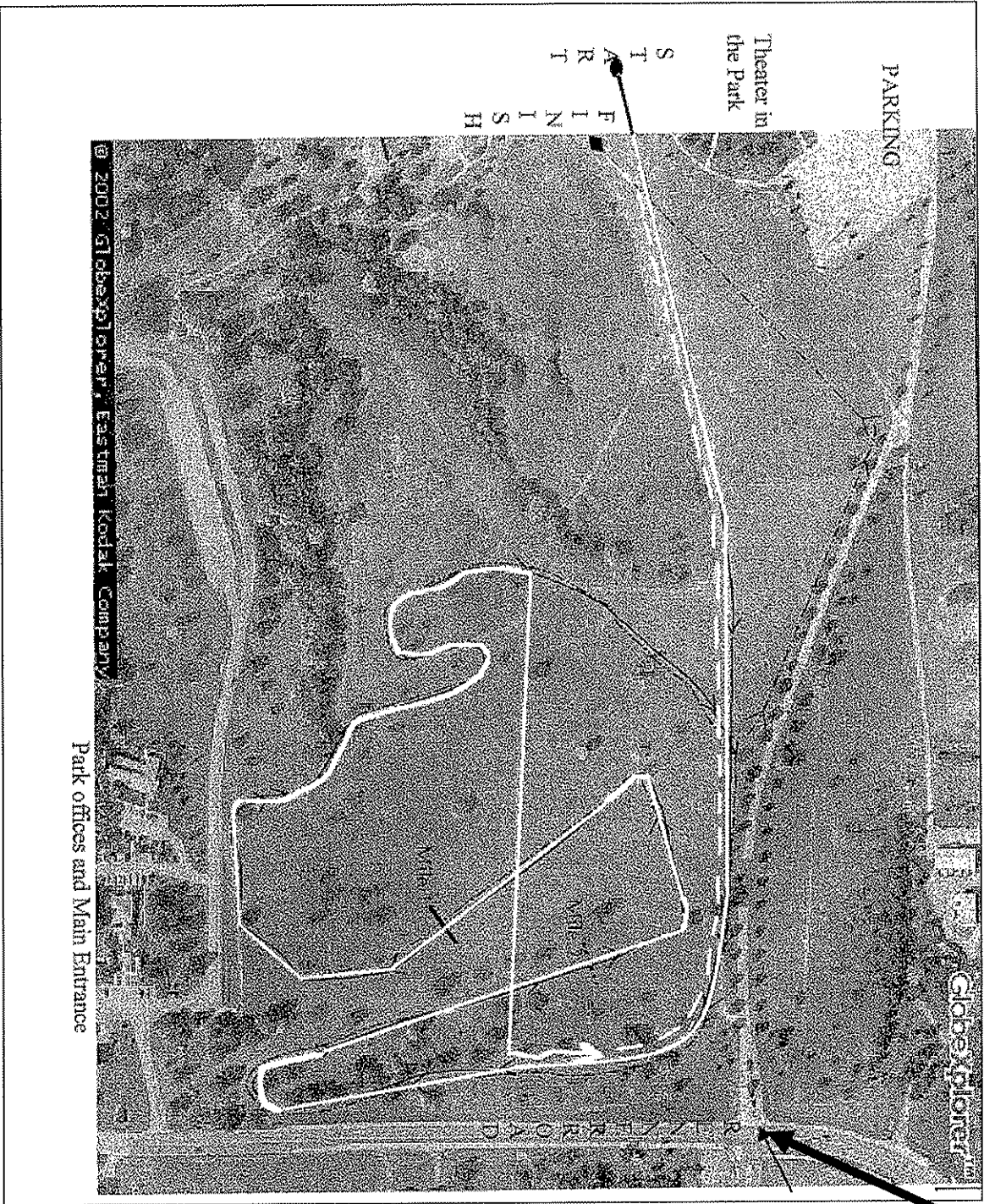
Estimated time home is 6:45pm. BUT please be available for a phone call anytime after 5:00pm in case we arrive back early.

TEAM/INDIVIDUAL CROSS COUNTRY PICTURES: Now Available! Please go online to www.pec-sports.com and order the Cross Country team photos and your athlete's individual Cross Country picture.

****The CROSS COUNTRY UNIFORM TURN-IN and PIZZA PARTY is on Tuesday, October 11, 2011 from 3:00-4:30pm in the WRMS Cafeteria (athletes only). Students need to wash and hand in their full uniform (shorts and shirt) and their sweats (pants and shirt).**

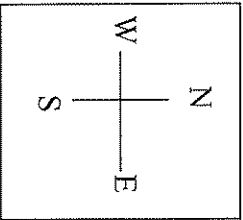
Thank you for making the 2011 WRMS XC season the most enjoyable and successful to date! The parent support was outstanding and student-athletes were hard working! We encourage all 8th Graders to run XC at the high school level and we encourage all 7th Graders to again run XC next fall. Everyone is also invited to run track this spring!

Thanks,
Coach Jeff Pierce
Coach Christi Evans
Coach Amanda Danielson

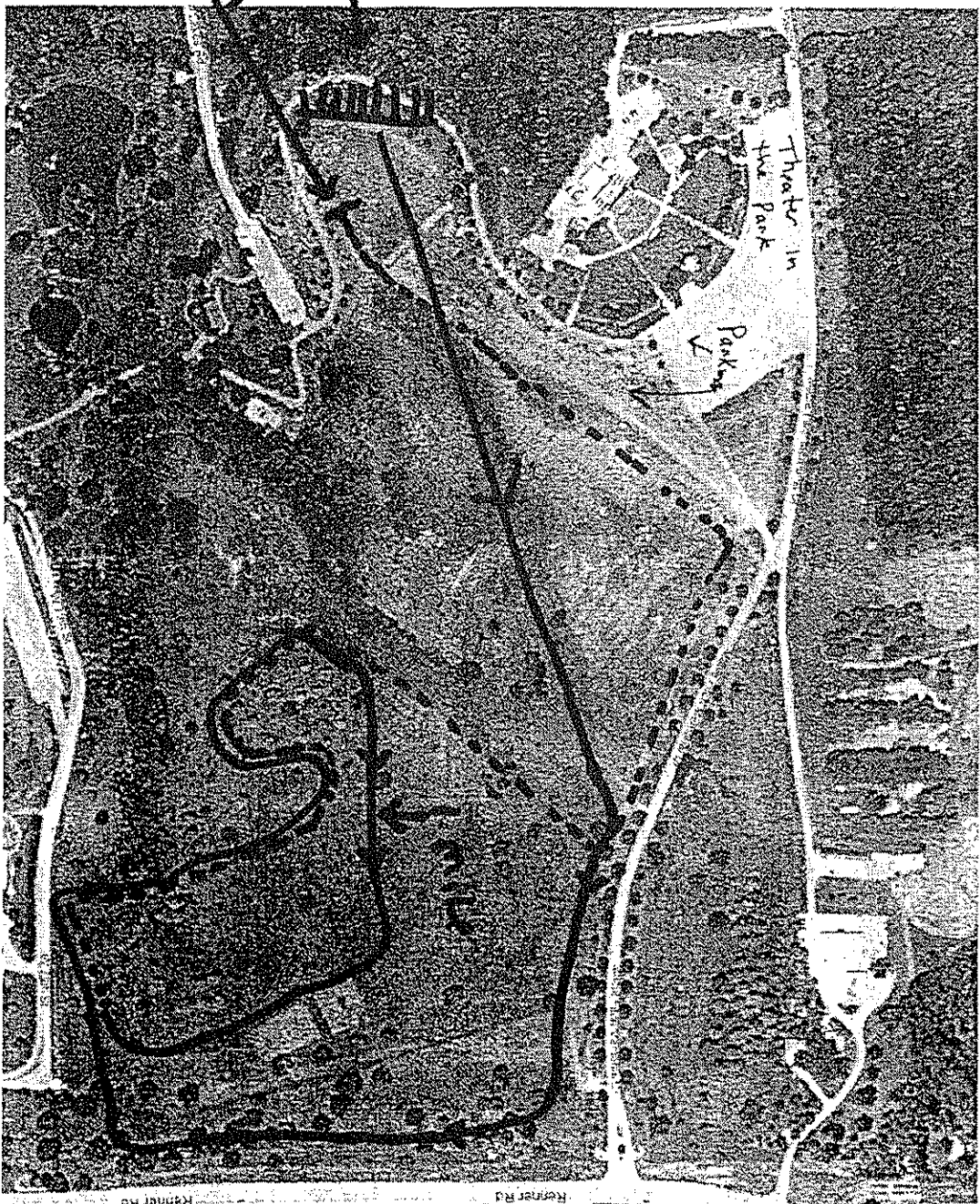


Theatre in the Park Entrance

Shawnee Mission Park
2 Mile Race Route



Go to Google Maps Home



S.M. Park

2 Mile Course

- First Lap
- Second lap to Finish.